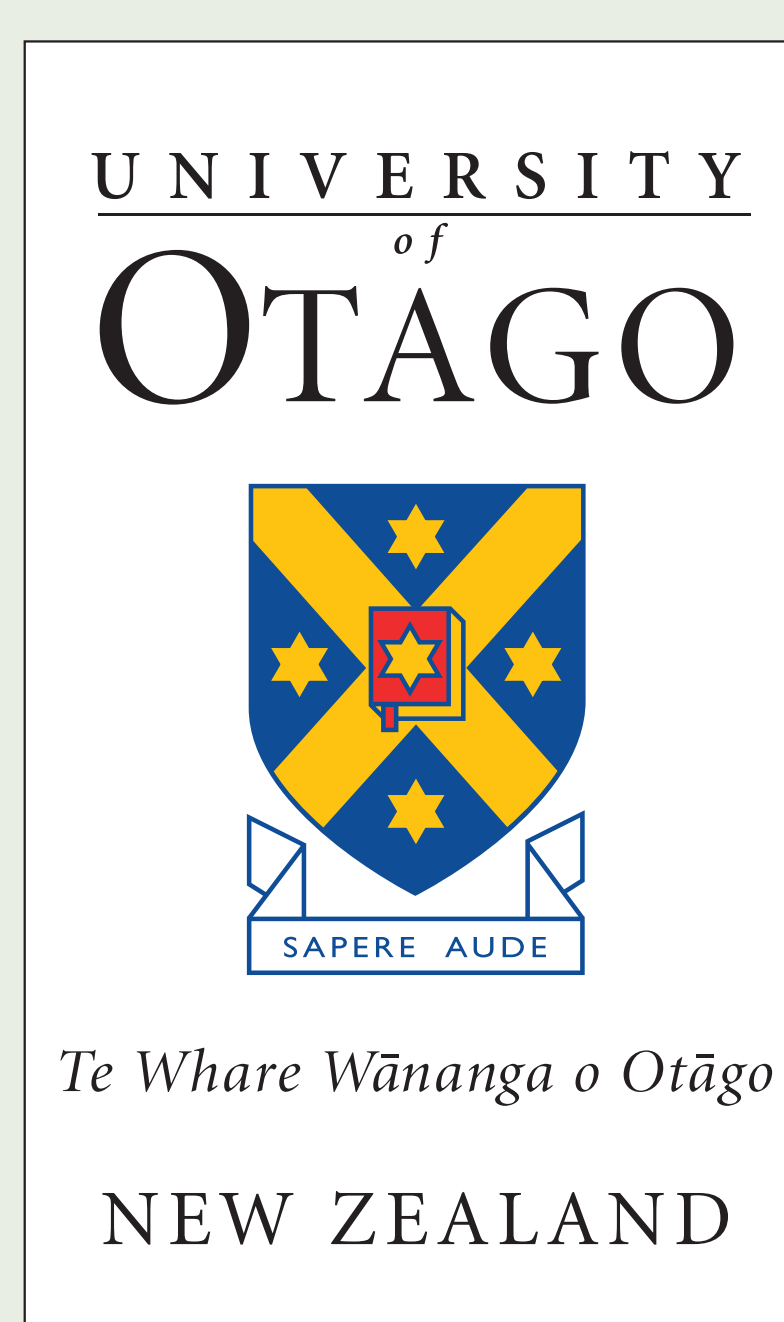
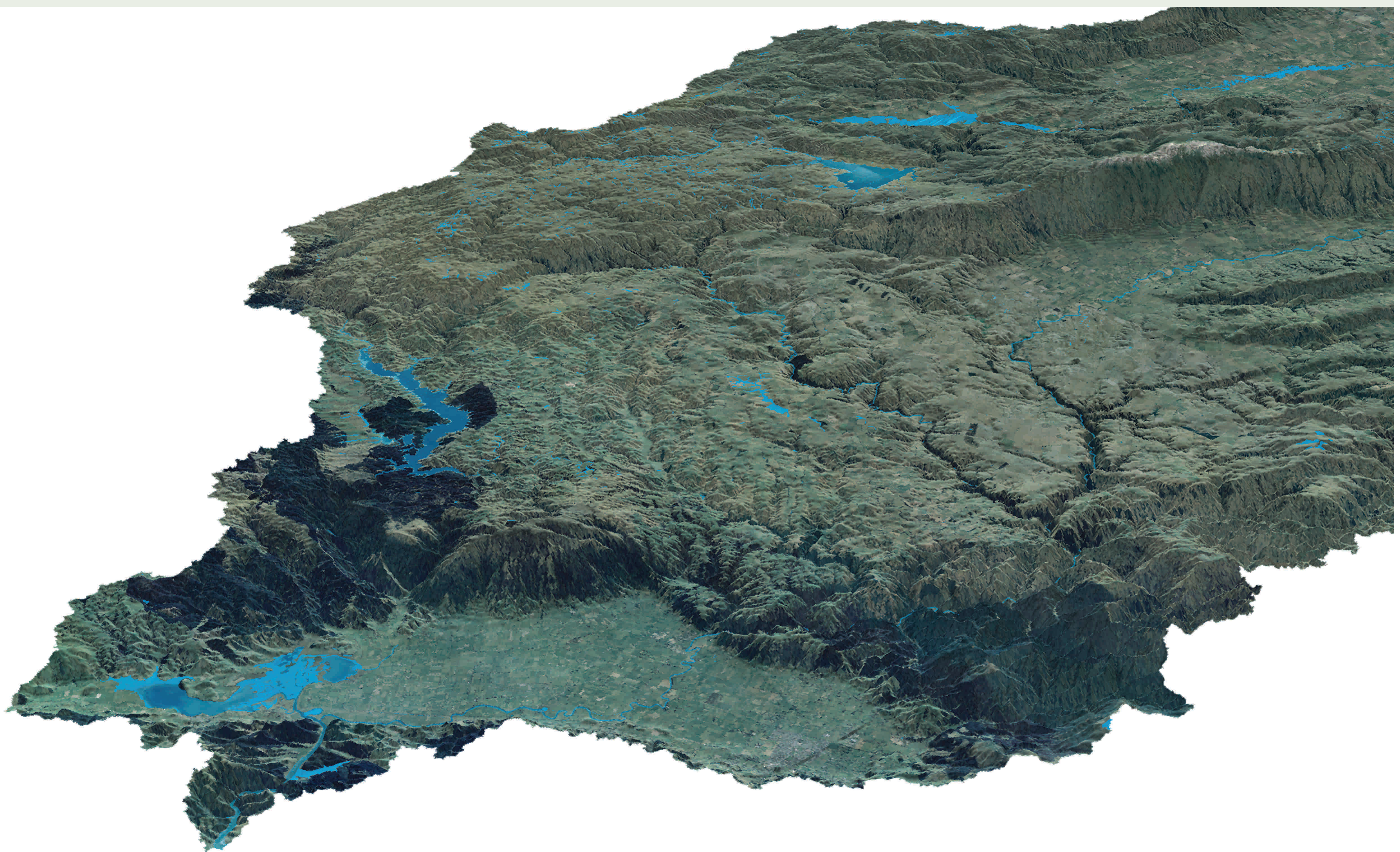


# MAP CHAT



The University of Otago, first\*

\* Ranked first in the Performance-Based Research Fund, TEC 2007,  
and the Ministry of Research Science and Technology report, *Research and Development in New Zealand, a decade in review*, 2006.

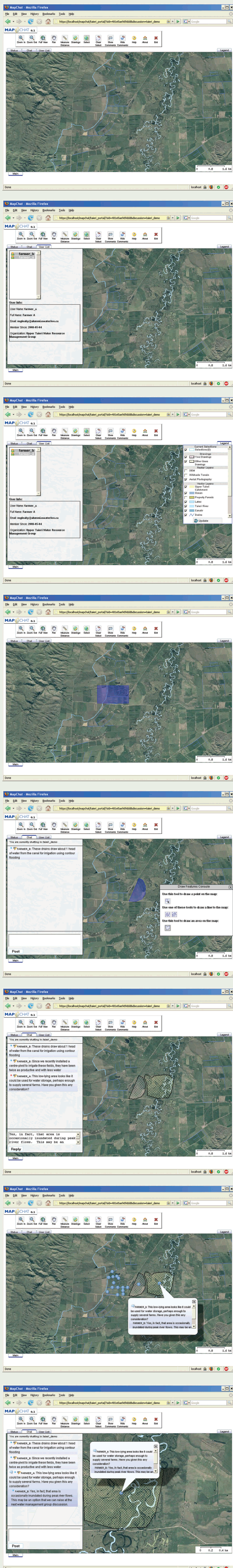
# MAPCHAT

Bringing rural communities together

In isolated rural areas, where complex land-related issues might need to be discussed, group decision-making is not easy. While many stakeholders need to be consulted and their needs considered, it can be almost impossible for all interested parties to meet and have their say.

MapChat can help. Combining user-friendly computing and internet technologies, it brings dispersed communities together in virtual contact to discuss issues of common interest, using digital maps as the medium of communication.

The multi-layered maps are twinned with a messaging service so approved participants can highlight and comment on areas of concern. These comments are shared on-line, enabling stakeholders to take part in full and frank discussions without having to travel to time-consuming public meetings. Decisions can then be reached, taking all opinions and points of view into account.



SCHOOL OF SURVEYING

UNIVERSITY OF OTAGO | TE WHARE WĀNANGA O OTĀGO  
0800 80 80 98 | [www.otago.ac.nz](http://www.otago.ac.nz) | txt 866 | [university@otago.ac.nz](mailto:university@otago.ac.nz)